



Vallarta Cup
January 7, 14, 21, 28 Racing
(First 4 Saturdays in January)
Vallarta Yacht Club, Nuevo
Vallarta, Nayarit
Banderas Bay Mexico



SAILING INSTRUCTIONS

1. RULES

- 1.1. The regatta will be governed by the rules as defined in *The Racing Rules of Sailing*.
- 1.2. VYC Standing Sailing Instructions for Ocean Class Events will apply. A copy of those instructions are in Attachment B.

2. **SIGNALS MADE ASHORE:** All signals will be made on VHF 63, Standing Rules 4.1 & 4.2 will not apply.

3. SCHEDULE OF RACES:

- 3.1. Dates of racing and after-party all divisions:

Date	Race	After-Party
January 7	Race 1	Dinner with music by Banda El Remedio (The Remedy)
January 14	Race 2	Dinner with music by The Piratas Verdes
January 21	Race 3	Cheeseburger in Paradise Night
January 28	Race 4	Trophy Night! Music by by Banda El Remedio (The Remedy)

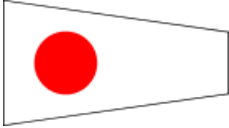
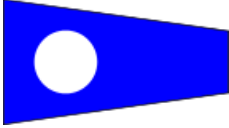
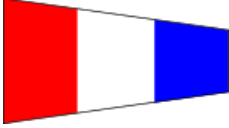
- 3.2. One Race is scheduled each day.. The RC may announce a time check before the first warning. The starting order will be announced not less than 15 minutes before the first warning.
- 3.3. The first start First Cruising Class is scheduled at 12:35 (12:30 Warning), The Multihull Class start 12:40 (12:35 Warning). The Performance Cruisers start 12:45 (12:40 Warning).

4. SKIPPERS MEETING:

4.1. Skippers meeting will be held by radio after the Saturday Morning VHF Radio Net. Announcement of the meeting will be made on the net (VHF 22A) and participants will be asked to move to channel 63 after the net.

5. CLASS FLAGS:

5.1. Number flags will be used to designate classes as follows:

Class	Flag	First Warning
Cruising Class	1 	12:30
Multihull Class	2 	12:35
Performance Class	3 	12:40

5.2. If VHF radio starts are used, there will be no class flags.

6. COURSES: As shown in Attachment C, Standing Rule 8.2 will not apply.

7. MARKS: As shown in Attachments C

8. THE START: The RC may use VHF 63 to announce the sequence.

9. HANDICAPS:

9.1. The races will be scored using time on time (TOT). Corrected Time equals (650/550 plus the boat's handicap) times the Lapse Time.

9.2. Skippers please check your rating on the posted Current list of Ratings for Banderas Bay Fleet. See if you have credit for Dacron sails, fixed Prop, roller furling.

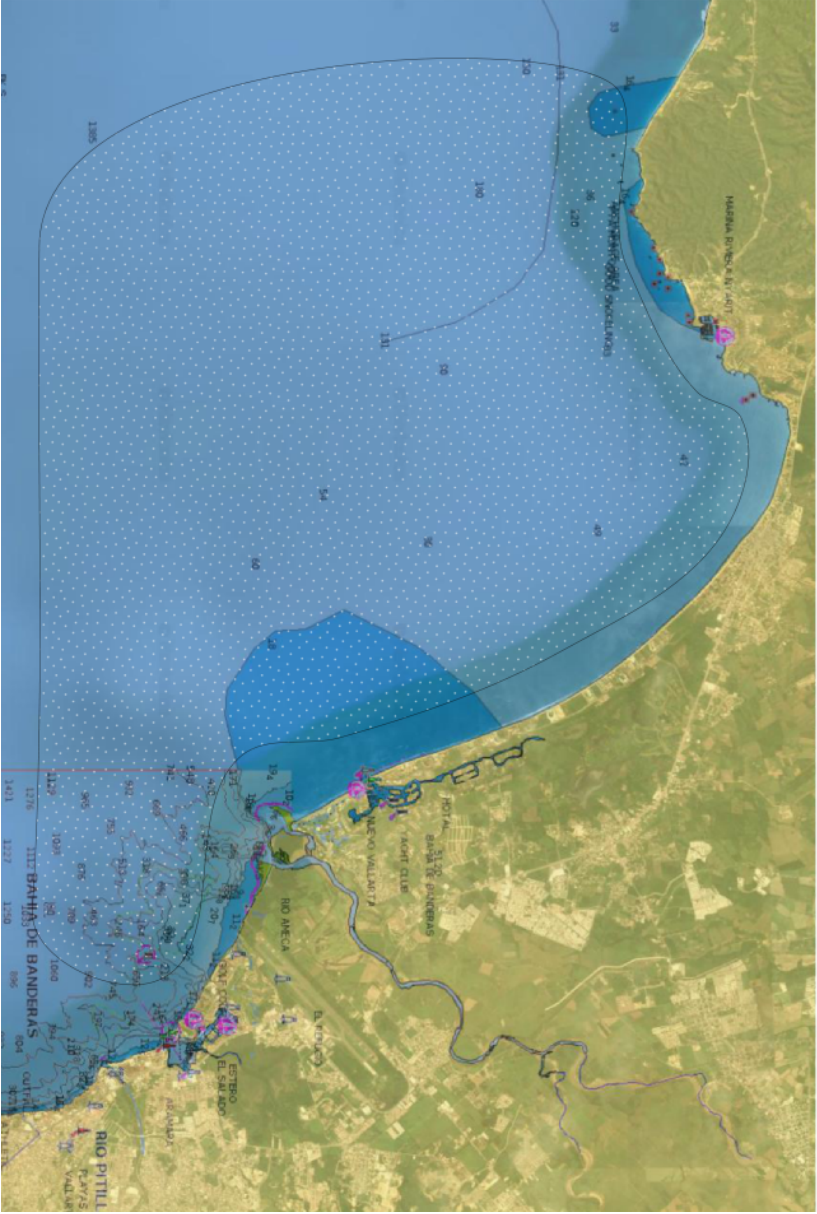
10. Trophies

10.1. Trophies will be given for the first three finishes (after handicaps) in each class.

Race Chairperson: Andy Barrow Handicapping: Banderas Bay Handicap Committee

Questions email sss@vallartayachtclub.org

Attachment A - Vallarta Cup Sailing Area



Attachment A - Vallarta Cup Sailing Area

Attachment B - VYC Standing Sailing Instructions



Vallarta Yacht Club

STANDING SAILING INSTRUCTIONS FOR OCEAN CLASS EVENTS

RULES

- 1.1. The regatta will be governed by the rules as defined in The Racing Rules of Sailing 2013-2016.
- 1.2. No national authority prescriptions will apply.
- 1.3. Event Specific Sailing instructions will apply.
- 1.4. Racing rule 44 PENALITIES AT THE TIME OF AN INCIDENT will be changed as follows: "One-Turn or Two-Turns Penalty" is replaced by "One-Turn Penalty". Racing rule 61.1 (a) (1) Informing the Protestee will be changed as follows: "if the other boat is beyond hailing distance, the protesting boat need not hail but she must inform the other boat and the Race Committee at the first reasonable opportunity using VHF Channel 63.
- 1.5. If there is a conflict between languages the English text will take precedence.

NOTICES TO COMPETITORS

Notices to competitors will be posted on the official notice board located at Vallarta Yacht Club and on the Vallarta Yacht Club website: www.vallartayachtclub.org

CHANGES TO SAILING INSTRUCTIONS

Any change to the sailing instructions will be posted before 0900 on the day it will take effect, except that any change to the schedule of races will be posted by 2000 on the day before it will take effect.

SIGNALS MADE ASHORE

- 1.6. Signals made ashore will be displayed on the mast at Vallarta Yacht Club.
- 1.7. When flag AP is displayed ashore, '1 minute' is replaced with 'not less than 45 minutes' in the race signal AP.

SCHEDULE OF RACES

- 1.8. Dates of racing: As posted in Event Sailing Instructions

CLASS FLAGS

Class signals will be Described in Event Sailing Instructions.

RACING AREAS

Attachment A shows the location of racing areas.

THE COURSES

- 1.9. The diagrams in Attachment C show the courses, including the approximate location of marks, the order in which marks are to be passed, and the side on which each mark is to be left.
- 1.10. No later than the warning signal, the race committee signal boat will display the approximate compass bearing of the first leg.

MARKS

- 1.11. Marks are described in Attachment C
- 1.12. A race committee boat signalling a change of a leg of the course is a mark as provided in instruction 12.2.

AREAS THAT ARE OBSTRUCTIONS

The following areas are designated as obstructions: The area NE of 20' 40.12 N 105'17.51 W to the river mouth is designated as an obstruction. *This reef extends every year. Give this area a wide berth.*

THE START

- 1.13. The starting line will be described in the Event Sailing Instructions.
- 1.14. Boats whose warning signal has not been made shall avoid the starting area during the starting sequence for other races.
- 1.15. If any part of a boat's hull, crew or equipment is on the course side of the starting line at any time during the two minutes before her starting signal and she is identified, the race committee will attempt to broadcast her sail number on VHF channel 63. Failure to make a broadcast or to time it accurately will not be grounds for a request for redress. This changes rule 62.1(a).

CHANGE OF THE NEXT LEG OF THE COURSE

- 1.16. To change the next leg of the course, the race committee will move the original mark (or the finishing line) to a new position.
- 1.17. Except at a gate, boats shall pass between the race committee boat

signalling the change of the next leg and the nearby mark, leaving the mark to port or starboard as required by the course in Attachment B. This changes rule 28.1.

THE FINISH

The finishing line will be described in the Event Sailing Instructions.

TIME LIMITS AND TARGET TIMES

- 1.18. Time limits and target times are as follows:

<i>Class</i>	<i>Time Limit Mark 1</i>	<i>Time Limit</i>	<i>Target Time</i>
ALL	45 minutes	5 Hours	3.0 hours

If no boat has passed Mark 1 within the Mark 1 time limit the race will be abandoned. Failure to meet the target time will not be grounds for redress. This changes rule 62.1(a).

- 1.19. Boats failing to finish within **one hour** after the first boat in her division sails the course and finishes will be scored Did Not Finish without a hearing. This changes rules 35, A4 and A5.

PROTESTS AND REQUESTS FOR REDRESS

- 1.20. Protest forms are available at the race office and for download from the VYC website. Protests and requests for redress or reopening shall be delivered there within the appropriate time limit.
- 1.21. For each class, the protest time limit is 90 minutes after the last boat has finished the last race of the day.
- 1.22. Notices will be posted no later than 30 minutes after the protest time limit to inform competitors of hearings in which they are parties or named as witnesses. Hearings will be held in the protest room, located at VYC, beginning at the time posted.
- 1.23. Notices of protests by the race committee or protest committee will be posted to inform boats under rule 61.1(b).

SAFETY REGULATIONS

- 1.24. Check-Out and Check-In: Boats shall Check-in by either coming within hail of the RC Signal Boat and checking in or by hailing the RC on VHF Channel 63.
- 1.25. A boat that retires from a race shall notify the race committee as soon as possible.

EQUIPMENT AND MEASUREMENT CHECKS

A boat or equipment may be inspected at any time for compliance with the class rules and sailing instructions. On the water, a boat can be instructed by a race committee equipment inspector or measurer to proceed immediately to a designated area for inspection.

TRASH DISPOSAL

Boats shall not put trash in the water. Trash must be retained on board and taken ashore for proper disposal.

RADIO COMMUNICATION

Except in an emergency, a boat shall neither make radio transmissions while racing nor receive radio communications not available to all boats. This restriction also applies to mobile telephones. VHF Channel 63 is the VYC official race frequency.

DISCLAIMER OF LIABILITY

Competitors participate in the regatta entirely at their own risk. See racing rule 4, Decision to Race. The organizing authority will not accept any liability for material damage or personal injury or death sustained in conjunction with or prior to, during, or after the regatta. A release of liability form must be on file at Vallarta Yacht Club.

INSURANCE

Each participating boat shall be insured with valid third-party liability insurance with minimum coverage required in Mexico or the equivalent.

Attachment C

Approximate Mark Positions, Colors, Shapes:

Mark	Latitude	Longitude	Type	Approx. Location
M	20 44.00'N	105 24.50'W	Spar Buoy	Off Point Montoga
B	20°44.12'N	105°23.39'W	Yellow Tetra	Off Point Blanca
L	20°44.40'N	105°22.60'W	Yellow Tetra	Off La Cruz
RC	20°41.98'N	105°18.76'W	Start Line	RC Boat if present
W	20°41.38'N	105°20.29'W	Orange Cyl.	1.6 nm to windward of RC
S	20°40.11'N	105°18.31'W	Yellow Tetra	River Amica (do NOT go inside)
C	20°38.98'N	105°15.71'W	PV Sea Buoy	
M1	20°41.05'N	105°21.23'W	Orange Tetra	Approx. 1.9NM to weather
M2	20°40.47'N	105°19.00'W	Orange Tetra	
M3	20°41.96'N	105°18.82'W	Orange Tetra	0.1 nm to windward of RC

Mark Layout Notes:

Mark W is approximately 1.6 nm to windward of Mark “L” The position above is for a wind direction of 240° Magnetic. ***The mark position depends on the wind direction on race day.***

For the Classic Course using M1, M2 & M3 the start/finish will be approximately 2.5nm to Leeward of M1 ***The position of the start area will depend on the wind direction.***

Mark S is in safe water off the Vidanta resort. ***There is a shoal off the river that will ruin your day ... don't go there.***

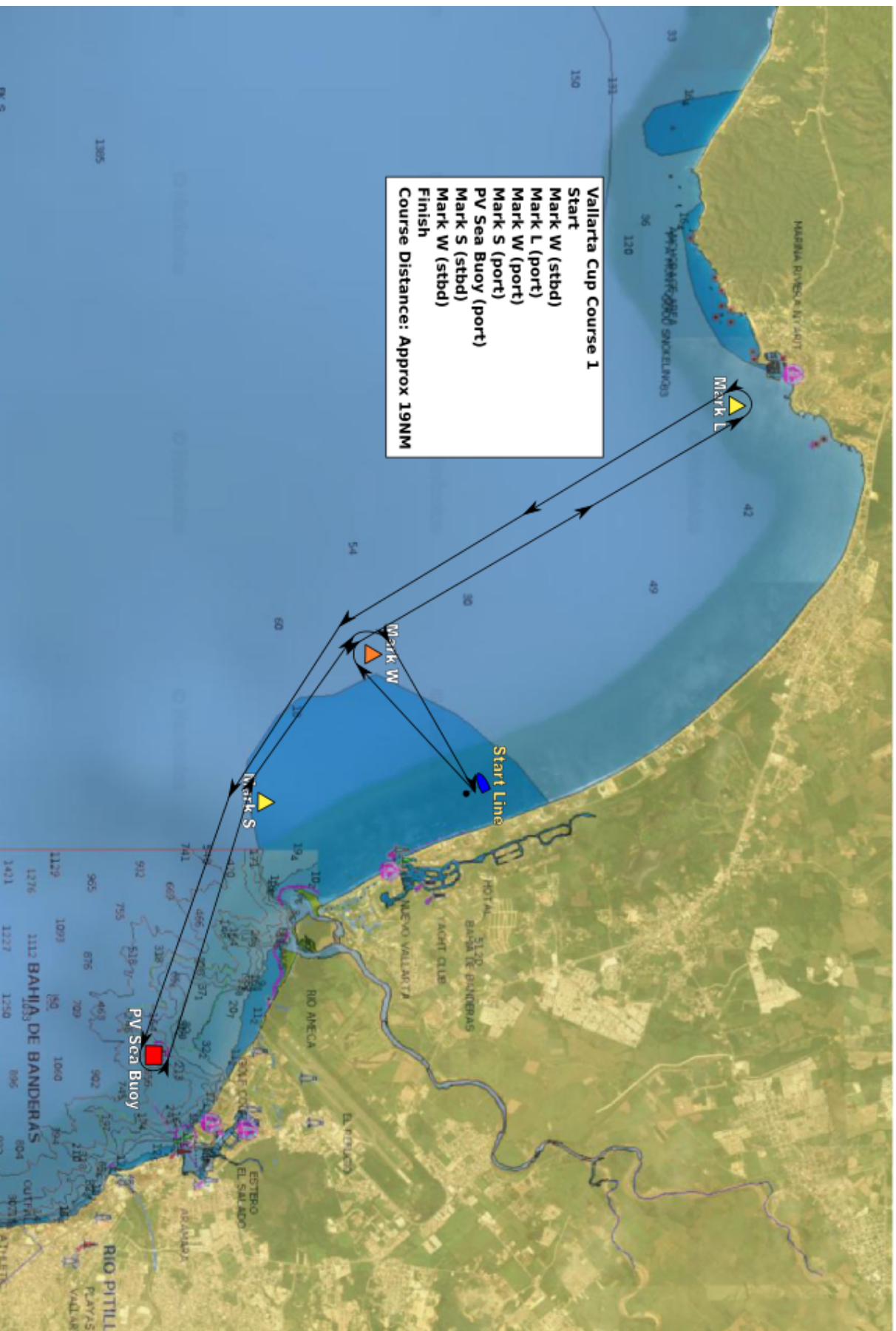
Please hail the RC if a mark is missing. The RC may ask the fleet to continue to race rounding stated GPS coordinates.

NOTE: Final Mark Shapes and Colors will be announced at the radio 15 minutes before the first warning on VHF 63. We will do our best to position marks according to the lat/long positions shown above, but MARKS MAY BE MOVED FOR SAFETY OR OTHER CONSIDERATIONS. If there is a difference between the actual mark position and the coordinates above, ACTUAL MARK POSITION AND COLOR WILL ALWAYS PREVAIL.

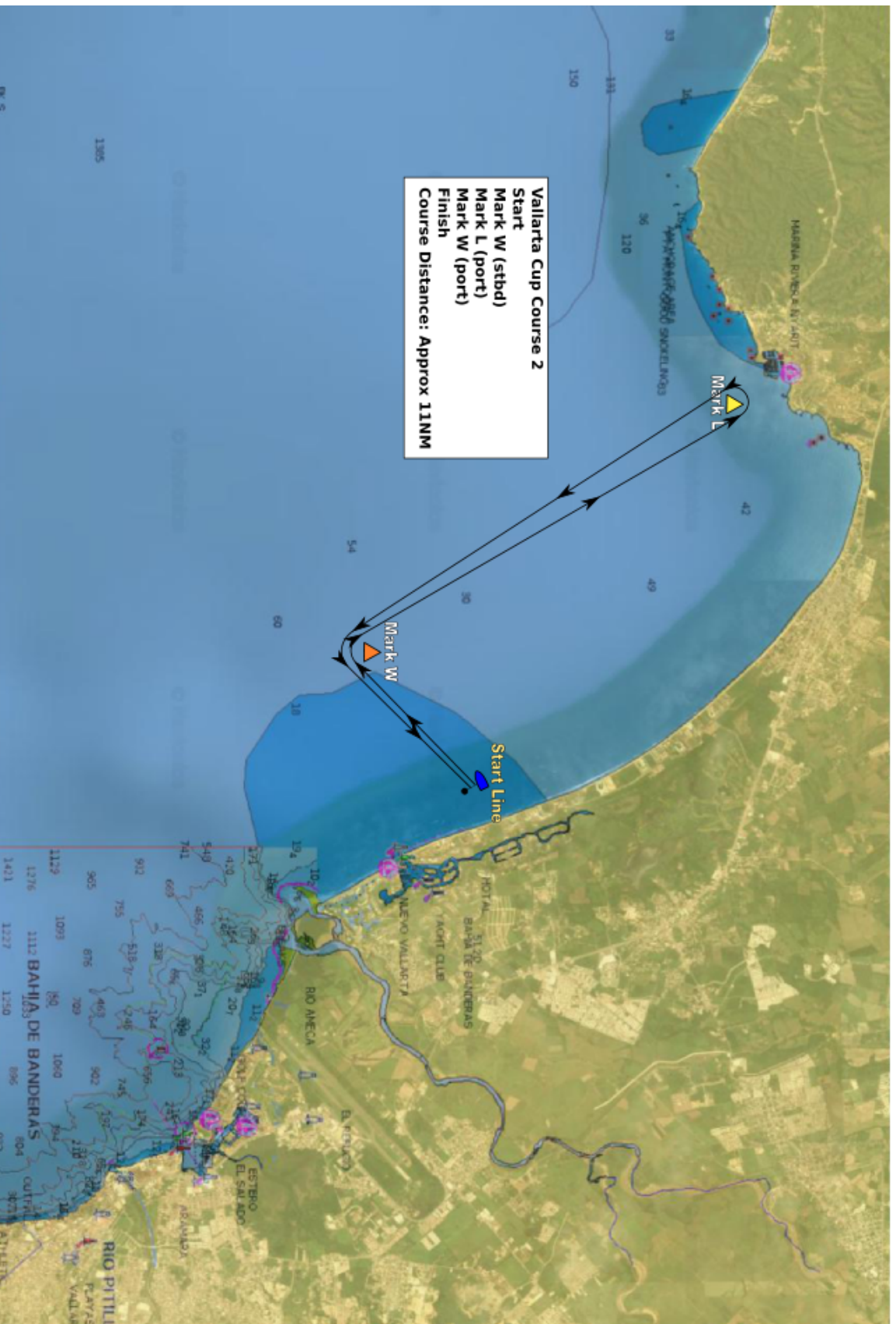
Redress will **not** be granted for mark positions different from published Lat/Lon.

Attachment C - Courses

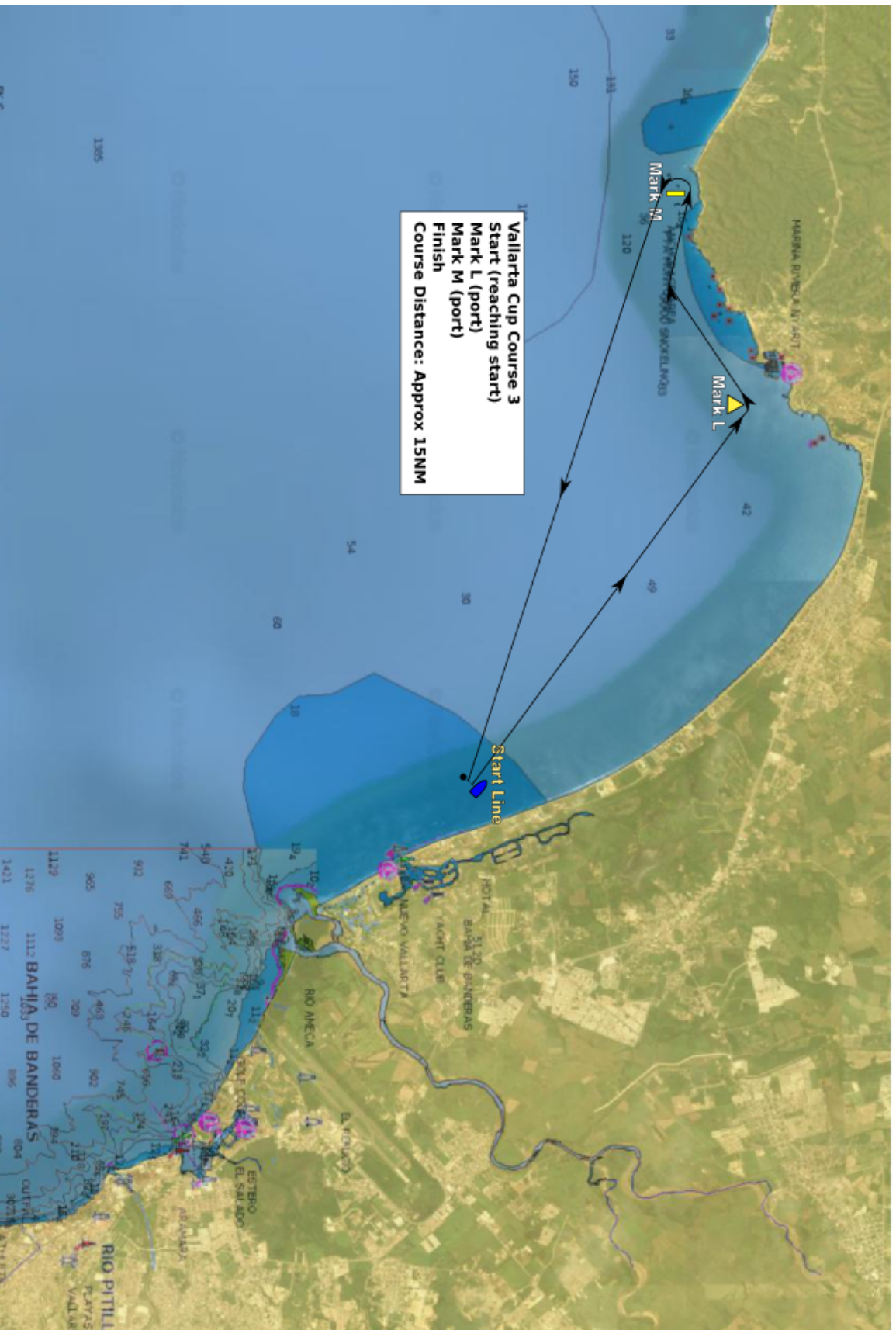
Attachment C - Vallarta Cup Course 1



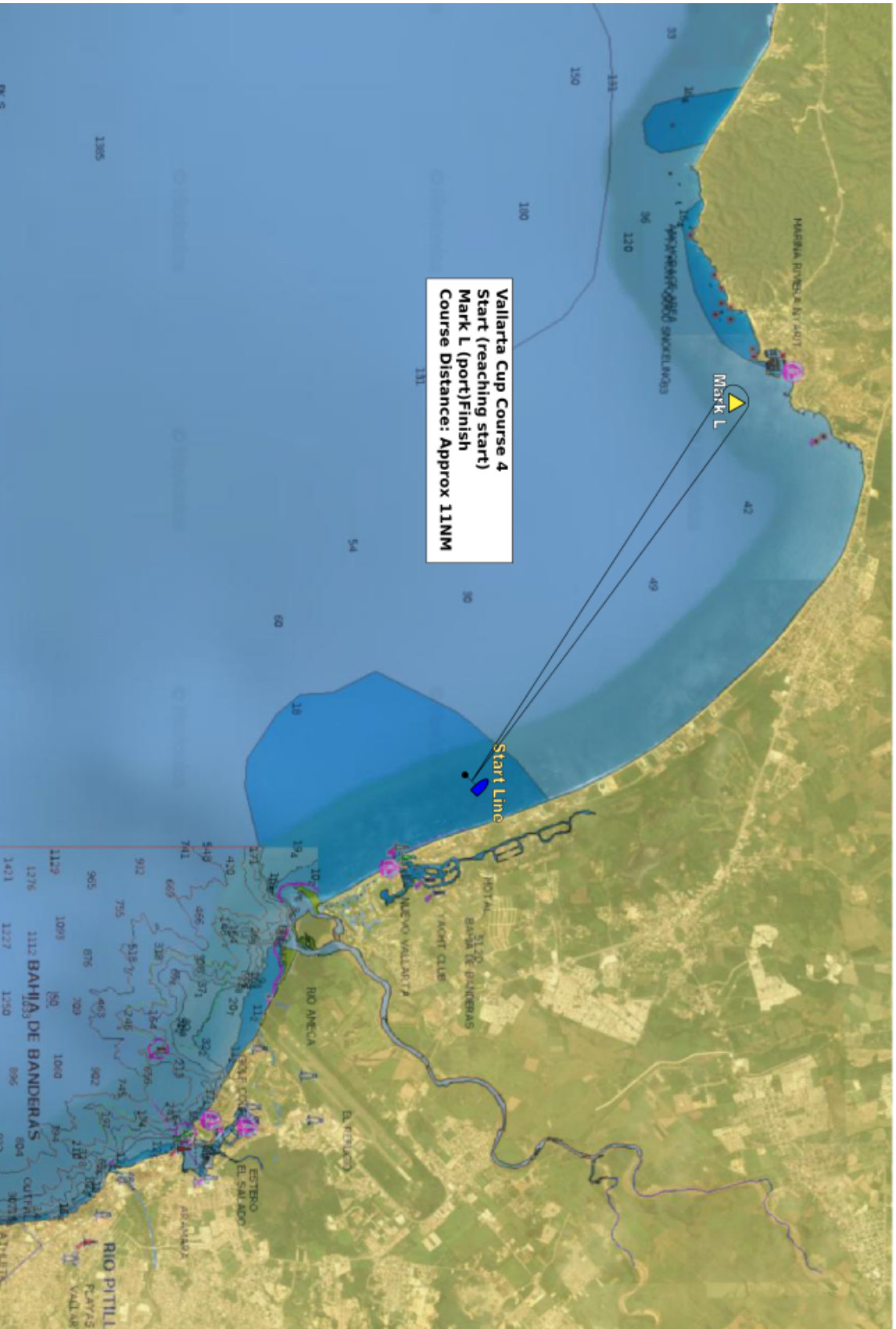
Attachment C - Vallarta Cup Course 2



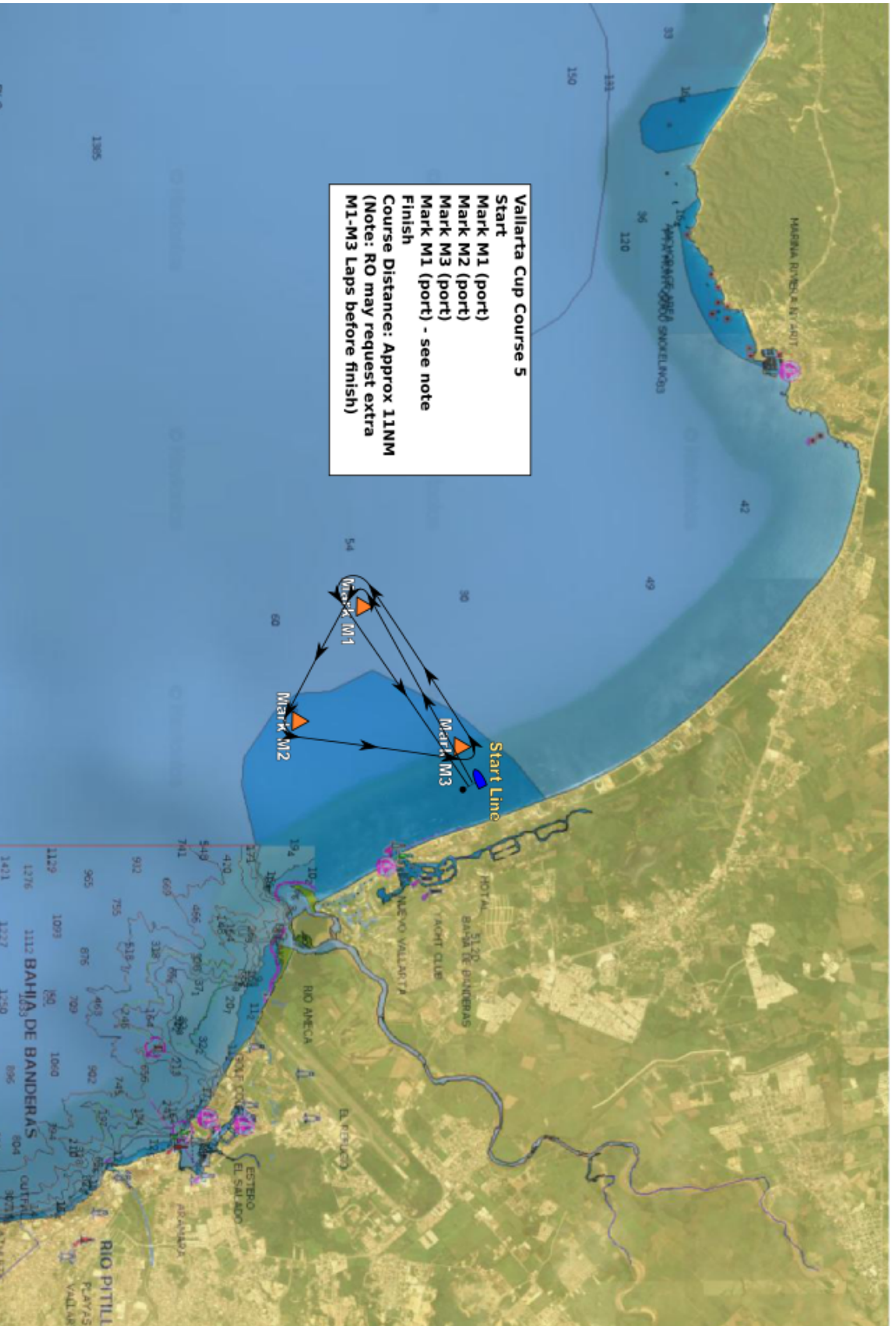
Attachment C - Vallarta Cup Course 3



Attachment C - Vallarta Cup Course 4



Attachment C - Vallarta Cup Course 5



Attachment C - Vallarta Cup Course 6

